

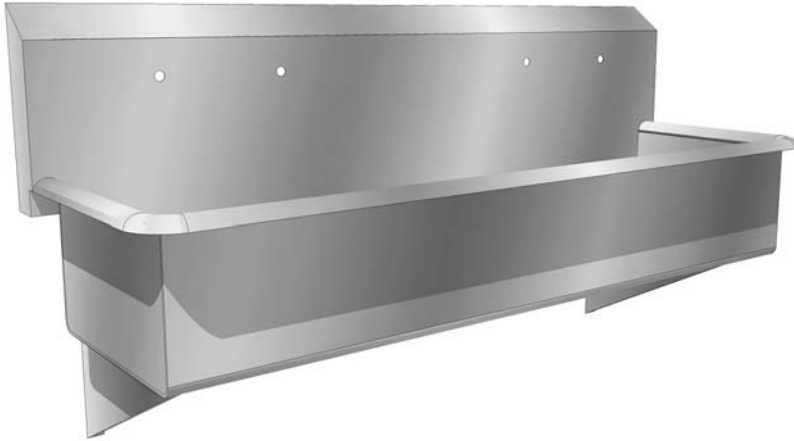


MULTIPLE STATION WASH-UP SINKS MSWS SERIES

PROJECT#: _____

ITEM# _____

MODEL# _____



MULTI-STATION WASH-UP SINKS

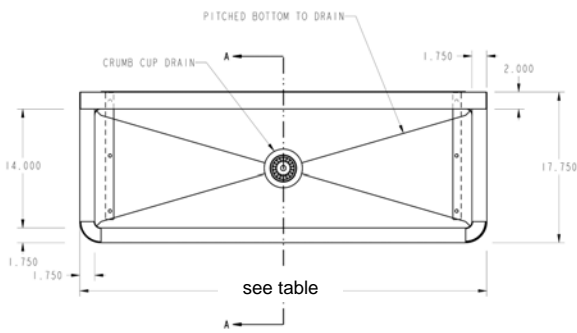
SPECIFICATIONS:

Ideal for factories, warehouses, schools, hospitals, institutions to provide an efficient easy-to-use multiple station wash-up sink. The unit is easy to install, made of durable, long-life, sanitary and easy-to-clean stainless steel.

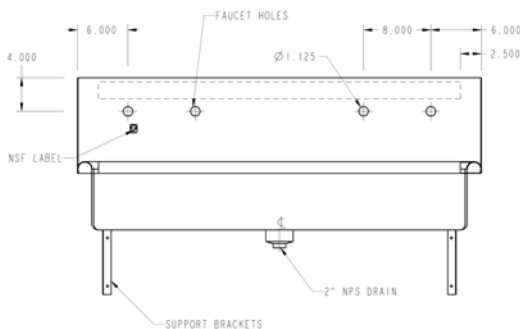
CONSTRUCTION:

- ◆ 16 ga type 304 stainless steel.
- ◆ All welded covered corner construction.
- ◆ Unit is pitched to center drain for rapid drainage.
- ◆ Backsplash prepunched with faucet holes 8" on center. 1 3/4" rolled rim is standard.
- ◆ Unit is provided with chrome plated basket drain, heavy-duty stainless steel wall support brackets and full-length "Z" wall clip.
- ◆ Entire unit is polished to #3 finish for exceptional appearance and ease in cleaning. Unit is wall hung.

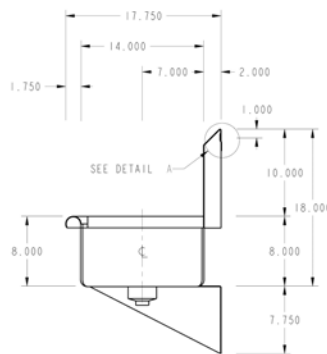
***Faucets are options



PLAN VIEW



FRONT VIEW



SIDE VIEW

Model No.	Length	# Faucets	Ship Wt. Lbs
MSWS-48	48"	2	75
MSWS-60	60"	3	85
MSWS-72	72"	3	110
MSWS-84	84"	4	125
MSWS-96	96"	4	150

* Special lengths and specifications are available .